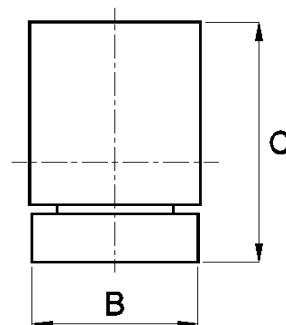
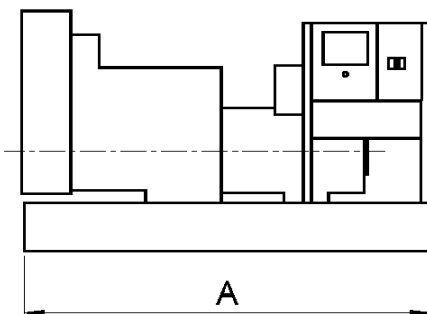


## Technical Data Sheet

### THE WESTAC RANGE OF DEUTZ POWERED DIESEL GENERATING SETS

### 50 Hz

Model	Engine	Ratings				Approximate unpacked dimensions					
		Prime		Standby		Fuel Cons	Length (A)mm	Width (B)mm	Height (C)mm	Nett Wt Kg	Packed Vol m3
		KVA	KW	KVA	KW						
WPDZ16	F3L1011F	16.0	12.8	19.0	15.2	4.6	1210	560	1040	465	1.2
WPDZ22	F4L1011F	22.5	18.0	26.0	20.8	5.9	1220	560	1040	525	1.25
WPDZ31	BF4L1011F	31.0	24.8	32.5	26.0	8.2	1220	560	1040	580	1.25
WPDZ16M	F3M1011F	16.0	12.8	20.0	16.0	4.7	1270	630	970	540	1.22
WPDZ22M	F4M1011F	22.5	18.0	27.5	22.0	6.4	1470	640	1000	590	1.45
WPDZ36M	BF4M1011F	36.0	28.8	39.0	31.2	9	1470	660	1030	610	1.53
WPDZ30	F3L912	30.0	24.0	31.0	24.8	6.8	1700	725	1080	635	2.00
WPDZ40	F4L912	40.0	32.0	42.0	33.6	8.9	1700	725	1320	790	2.40
WPDZ47	F4L914	47.0	37.6	50.0	40.0	TBA	1665	760	1400	865	2.50
WPDZ60	F6L912	60.0	48.0	61.0	48.8	13.5	2100	725	1320	970	2.84
WPDZ72	F6L914	72.5	58.0	77.0	61.6	TBA	2060	760	1400	1040	3.06
WPDZ100A	BF6L913	100.0	80.0	106.0	84.8	24.3	2150	730	1320	990	2.93
WPDZ130	BF6L913C	136	108.8	142	113.6	29.8	2280	740	1395	1005	3.28
WPDZ85	BF4M1013E	85.0	68.0	93.0	74.4	20.9	1900	680	1390	1030	2.56
WPDZ100	BF4M1013EC	100.0	80.0	106.0	84.8	21.6	2060	710	1420	1180	2.92
WPDZ135	BF6M1013E	135.0	108.0	142.0	113.6	28.6	2300	790	1420	1500	3.57
WPDZ160	BF6M1013EC	159.0	127.2	167.0	133.6	32.0	2460	870	1420	1600	4.15
WPDZ175	BF6M1013FCPG2	175.0	140.0	202.0	161.6	TBA	2470	1005	1650	1675	5.39
WPDZ200	BF6M1013FCPG3	200.0	160.0	221.0	176.8	TBA	2555	1005	1650	1775	5.57
WPDZ230	BF6M1015	230.0	184.0	250.0	200.0	54.6	2580	1180	1790	2290	7.00
WPDZ300	BF6M1015CG1	300.0	240.0	350.0	280.0	68.6	2700	1180	1920	2150	8.6
WPDZ350	BF6M1015CG2	350.0	280.0	386.0	308.8	86.0	2700	1515	1920	2200	9.81
WPDZ400	BF6M1015CPG3	400.0	320.0	411.0	328.8	80.6	2780	1515	2070	2330	10.76
WPDZ433	BF8M1015CG1	433.0	346.4	477.0	381.6	91.9	2980	1520	2070	3000	11.58
WPDZ450	BF8M1015C2G2	450.0	360.0	523.0	418.4	115.0	2980	1520	2070	3070	11.58
WPDZ500	BF8M1015CPG3	500.0	400.0	562.0	449.6	111.1	3010	1600	2120	3100	12.53
WPDZ630	TBD616V12G1	630.0	504.0	727.0	581.6	128.0	4760	1740	2070	5520	20.75
WPDZ700	TBD616V12G2	700.0	560.0	800.0	640.0	145.0	4760	1740	2070	5520	20.75
WPDZ750	TBD616V12G3	750.0	600.0	820.0	656.0	152.0	4760	1740	2070	5520	20.75
WPDZ800	TBD616V12G4	800.0	640.0	N/A	N/A	165.0	4760	1740	2070	5520	20.75
WPDZ900	TBD616V16G1	900.0	720.0	995.0	796.0	182.0	5230	2020	2350	7000	29.38
WPDZ1000	TBD616V16G2	1000.0	800.0	1105.0	884.0	202.0	5230	2020	2350	7000	29.38
WPDZ1260	TBD620V12G1	1260.0	1008.0	1400.0	1120.0	254.0	6850	2795	2995	11660	65.29
WPDZ1410	TBD620V12G2	1410.0	1128.0	1550.0	1240.0	285.0	6850	2795	2995	11760	65.29
WPDZ1550	TBD620V12G3	1550.0	1240.0	1650.0	1320.0	319.0	6975	2795	2995	11900	66.46
WPDZ1755	TBD620V16G1	1755.0	1404.0	1860.0	1488.0	351.0	7200	2795	2995	13750	68.57
WPDZ1800	TBD620V16G2	1800.0	1440.0	2070.0	1656.0	361.0	7320	2795	2995	14100	69.7
WPDZ2000	TBD620V16G3	2000.0	1600.0	2134.0	1707.2	426.0	7400	2795	2995	14350	70.45
WPDZ2400	TBD620V16G4	2440.0	1952.0	2565.0	2052.0	450.0	7450	2795	2995	14560	70.92



#### Notes:

- Figures quoted are based on a Power Factor of 0.8
- All ratings are in accordance with ISO8528-1 and ISO3046,BS5514 and DIN6271 conditions
- All ratings quoted are based upon nominal 380V 3ph 50Hz and 440V 3ph 60Hz. Voltages outside these parameters may alter the quoted ratings.
- Ratings quoted are based on standard alternator. Customer preference may alter ratings to suit available frame sizes.
- Ratings based on Deutz supplied test data under NTP ambient conditions. Please contact Westac to assess if any derate is required
- Fuel consumption figures are in litres per hour at 100% continuous load.
- All information given is for guidance only and subject to alteration without notice

The information given in this leaflet is for the assistance of users and is intended for general guidance only. Due to a policy of continuous improvement the company reserves the right to amend details and specifications without notice and all information given is subject to the company's current conditions of sale (01/2004)



MEMBER  
ASSOCIATION OF  
MANUFACTURERS OF  
POWER GENERATING SYSTEMS