

Technical Data Sheet

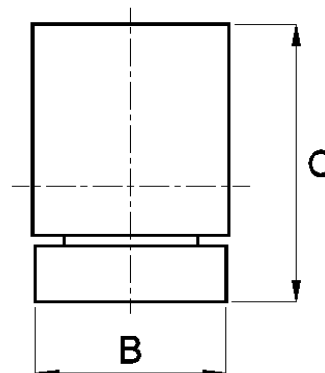
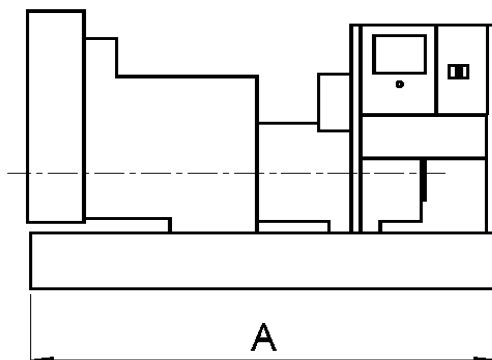
THE WESTAC RANGE OF MAN POWERED DIESEL GENERATING SETS

50 Hz

Model	Engine	Ratings				Fuel Cons	Approximate unpacked dimensions				
		Prime		Standby			Length (A)mm	Width (B)mm	Height (C)mm	Nett Wt Kg	Packed Vol m3
		KVA	KW	KVA	KW						
WPMAN250	D0836LE201	250.0	200.0	267.5	214.0	55.8	2970	1200	1680	2450	7.7
WPMAN300	D2866LE201(3)	300.0	240.0	407.0	325.6	65.0	3070	1200	1680	2560	7.95
WPMAN400	D2876LE201(3)	400.0	320.0	515.0	412.0	87.5	2850	1330	1770	2830	8.52
WPMAN470	D2848LE211(3)	470.0	376.0	568.0	454.4		TBA				
WPMAN500	D2840LE201(3)	500.0	400.0	627.0	501.6	103.3	3150	1330	1770	3355	9.39
WPMAN570	D2840LE211(3)	570.0	456.0	693.0	554.4		TBA				
WPMAN630	D2842LE201(3)	630.0	504.0	727.5	582.0	126.1	3400	1580	1950	3970	12.94
WPMAN670	D2842LE211(3)	673.0	538.4	795.0	636.0		3600	1630	1920	4420	13.89

60 Hz

Model	Engine	Ratings				Fuel Cons	Approximate unpacked dimensions				
		Prime		Standby			Length (A)mm	Width (B)mm	Height (C)mm	Nett Wt Kg	Packed Vol m3
		KVA	KW	KVA	KW						
WPMAN250	D0836LE201	274.0	219.2	300	240.0	65.6	2970	1200	1680	2450	7.7
WPMAN300	D2866LE201(3)	356.0	284.8	442.0	353.6	78.5	3070	1200	1680	2560	7.95
WPMAN400	D2876LE201(3)	446.0	356.8	567.0	453.6	103.2	2850	1330	1770	2830	8.52
WPMAN470	D2848LE211(3)	513.0	410.4	590.0	472.0		TBA				
WPMAN500	D2840LE201(3)	581.0	464.8	646.0	516.8	125.1	3150	1330	1770	3355	9.39
WPMAN570	D2840LE211(3)	617.0	493.6	748.0	598.4		TBA				
WPMAN630	D2842LE201(3)	706.0	564.8	820.0	656.0	149.1	3400	1580	1950	3970	12.94
WPMAN670	D2842LE211(3)	775.0	620.0	915.0	732.0		3600	1630	1920	4420	13.89



Notes:

- Figures quoted are based on a Power Factor of 0.8
- All ratings are in accordance with ISO8528-1 and ISO3046, BS5514 and DIN6271 conditions
- All ratings quoted are based upon nominal 380V 3ph 50Hz and 440V 3ph 60Hz. Voltages outside these parameters may alter the quoted ratings.
- Ratings quoted are based on standard alternator. Customer preference may alter ratings to suit available frame sizes.
- Ratings based on MAN supplied test data under NTP ambient conditions. Please contact Westac to assess if any derate is required
- Fuel consumption figures are in litres per hour at 100% continuous load.
- All information given is for guidance only and subject to alteration without notice