

Technical Data Sheet

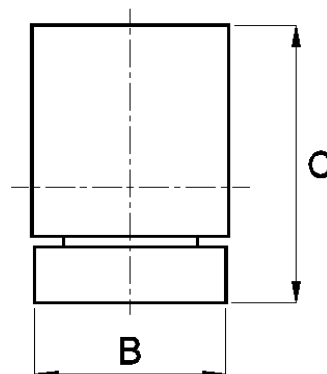
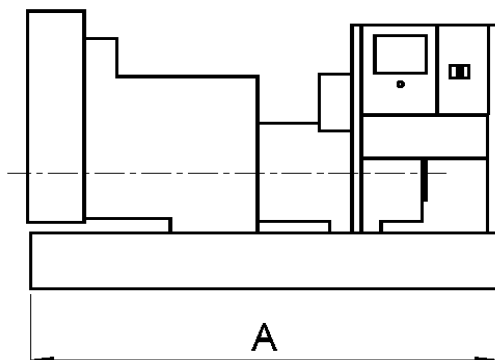
THE WESTAC RANGE OF MTU POWERED DIESEL GENERATING SETS

50 Hz

Model	Engine	Ratings				Fuel Cons	Approximate unpacked dimensions				
		Prime		Standby			Length (A)mm	Width (B)mm	Height (C)mm	Nett Wt Kg	Packed Vol m3
		KVA	KW	KVA	KW						
WPMTU650	12V2000G23	647.0	517.6	716.0	572.8	133.4	3850	1580	1850	5200	13.93
WPMTU700	12V2000G63	714.0	571.2	776.0	620.8	147.6	4000	1460	2000	6000	14.39
WPMTU800	16V2000G23	830.0	664.0	918.0	734.4	170.0	4400	1540	2040	6500	16.9
WPMTU900	16V2000G63	910.0	728.0	1028.0	822.4	189.2	4500	1750	2270	6700	21.44
WPMTU1000	18V2000G63	1000.0	800.0	1116.0	892.8	213.5	4500	1750	2270	6900	21.44
WPMTU1001	8V4000G61	1000.0	800.0	1172.0	937.6	210.3	CONSULT FACTORY				
WPMTU1350	12V4000G21	1350.0	1080.0	1540.0	1232.0	278.7	CONSULT FACTORY				
WPMTU1500	12V4000G61	1540.0	1232.0	1708.0	1366.4	309.3	CONSULT FACTORY				
WPMTU1850	16V4000G21	1860.0	1488.0	2056.0	1644.8	366.3	CONSULT FACTORY				
WPMTU2000	16V4000G61	2000.0	1600.0	2130.0	1704.0	402.9	CONSULT FACTORY				

60 Hz

Model	Engine	Ratings				Fuel Cons	Approximate unpacked dimensions				
		Prime		Standby			Length (A)mm	Width (B)mm	Height (C)mm	Nett Wt Kg	Packed Vol m3
		KVA	KW	KVA	KW						
WPMTU760	12V2000G43	760	608.0	818.0	654.4	164.5	3850	1580	1850	5200	13.93
WPMTU860	12V2000G83	866.0	692.8	947.0	757.6	165.0	4000	1460	2000	6000	14.39
WPMTU1050	16V2000G43	1050.0	840.0	1125.0	900.0	225.8	4400	1540	2040	6500	16.9
WPMTU1100	16V2000G83	1151.0	920.8	1250.0	1000.0	218.4	4500	1750	2270	6700	21.44
WPMTU1180	18V2000G83	1180.0	944.0	1412.0	1129.6	254.4	4500	1750	2270	6900	21.44
WPMTU1150	8V4000G81	1157.0	925.6	1250.0	1000.0	237.0	CONSULT FACTORY				
WPMTU1500	12V4000G21	1550.0	1240.0	1722.0	1377.6	306.0	CONSULT FACTORY				
WPMTU1700	12V4000G81	1735.0	1388.0	1908.0	1526.4	350.1	CONSULT FACTORY				
WPMTU2000	16V4000G21	2114.0	1691.2	2323.0	1858.4	401.0	CONSULT FACTORY				
WPMTU2300	16V4000G81	2300.0	1840.0	2552.0	2041.6	467.5	CONSULT FACTORY				



Notes:

- Figures quoted are based on a Power Factor of 0.8
- All ratings are in accordance with ISO8528-1 and ISO3046, BS5514 and DIN6271 conditions
- All ratings quoted are based upon nominal 380V 3ph 50Hz and 440V 3ph 60Hz. Voltages outside these parameters may alter the quoted ratings.
- Ratings quoted are based on standard alternator. Customer preference may alter ratings to suit available frame sizes.
- Ratings based on MTU supplied test data under NTP ambient conditions. Please contact Westac to assess if any derate is required
- Fuel consumption figures are in litres per hour at 100% continuous load.
- All information given is for guidance only and subject to alteration without notice

The information given in this leaflet is for the assistance of users and is intended for general guidance only. Due to a policy of continuous improvement the company reserves the right to amend details and specifications without notice and all information given is subject to the company's current conditions of sale (01/2004)


DIESEL GENERATORS & POWER SYSTEMS



MEMBER
ASSOCIATION OF
MANUFACTURERS OF
POWER GENERATING SYSTEMS