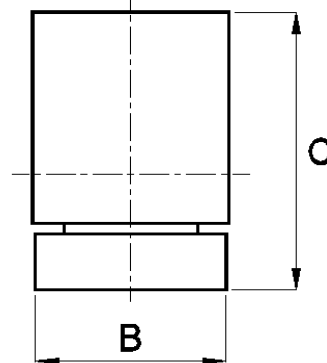
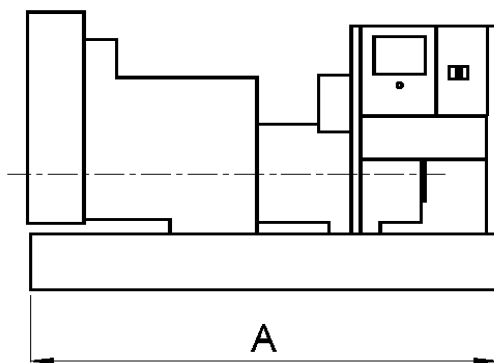


Technical Data Sheet

THE WESTAC RANGE OF PERKINS POWERED DIESEL GENERATING SETS

60 Hz

Model	Engine	Ratings				Fuel Cons	Approximate unpacked dimensions				
		Prime		Standby			Length (A)mm	Width (B)mm	Height (C)mm	Nett Wt Kg	Packed Vol m3
		KVA	KW	KVA	KW						
WPP08	403C-11	10.2	8.2	12.0	9.6	3.3	1020	550	1000	300	0.91
WPP11	403C-15	13.8	11.0	16.5	13.2	4.3	1050	550	1000	350	0.93
WPP20	404-22G	24.0	19.2	26.5	21.2	6.4	1225	550	1045	450	1.12
WPP30	1103A-33G	35.0	28.0	38.5	30.8	8.5	1620	770	1250	560	2.00
WPP40	1103A-33TG1	52.5	42.0	60.0	48.0	12.0	1660	770	1300	865	2.15
WPP60	1103A-33TG2	70.0	56.0	73.5	58.8	17.0	1700	770	1300	910	2.20
WPP66	1104A-44TG1	77.5	62.0	85.0	68.0	21.0	1880	770	1300	970	2.55
WPP80	1104A-44TG2	93.0	74.4	102.0	81.6	26.0	2030	770	1300	1120	2.95
WPP100	1104C-44TAG2	110.0	88.0	120.0	96.0	25.0	2030	770	1300	1165	2.95
WPP140	1006TAG	154.0	123.2	168.0	134.4	38.0	2300	775	1440	1310	3.50
WPP150	1006TAG2	175.0	140.0	186.0	148.8	41.0	2300	775	1500	1520	3.70
WPP175	1306 F87TAG1	190.0	152.0	200.0	160.0	42.0	2565	900	1635	1560	5.20
WPP190	1306 E87TAG2	206.0	164.8	222.5	178.0	46.0	2605	900	1635	1610	5.25
WPP210	1306 E87TAG3	231.0	184.8	257.0	205.6	54.0	2605	900	1635	1610	5.25
WPP230	1306 E87TAG4	235.0	188.0	272.0	217.6	58.0	2765	900	1635	1860	5.55
WPP250	1306 E87TAG6	267.0	213.6	293.0	234.4	63.0	2765	900	1635	1865	5.55
WPP300S	2306C-F14TAG1	348.0	278.4	375.0	300.0	77.4	2935	925	1605	2480	5.90
WPP350S	2306C-E14TAG2	393.0	314.4	418.0	334.4	85.7	3100	925	1955	2760	7.40
WPP400S	2306C-E14TAG3	420.0	336.0	500.0	400.0	94.7	3100	925	1955	2855	7.40
WPP450S	2806C-TAG1	550.0	440.0	625.0	500.0	117.0	3000	1410	1725	3485	9.40
WPP500S	2806C-TAG2	617.5	494.0	693.0	554.4	127.0	3000	1410	1725	3485	9.40
WPP560S	2806C-F18TAG1	638.0	510.4	699.0	559.2	127.0	3310	1536	2050	3767	12.50
WPP694S	2806C-E18TAG3	694.0	555.2	763.0	610.4	127.0	3310	1536	2050	3767	12.50
WPP600S	4006C-23TAG1A	707.0	565.6	767.0	613.6	145.0	3600	1410	2040	4590	13.00
WPP700S	4006C-23TAG2A	760.0	608.0	844.0	675.2	161.0	3600	1410	2040	4870	13.00
WPP800S	4006C-23TAG3A	810.0	648.0	872.5	698.0	175.0	3600	1410	2040	4870	13.00
WPP900D	4008TAG1	910.0	728.0	974.0	779.2	198.0	4830	1900	2250	7730	24.95
WPP1000D	4008TAG2	1027.0	821.6	1096.0	876.8	226.0	4830	1900	2250	7880	24.95
WPP1260D	4012TWG2	1256.0	1004.8	1362.0	1089.6	247.0	4830	1870	2440	9000	26.15
WPP1350D	4012TAG1	1338.0	1070.4	1412.5	1130.0	281.0	4940	2000	2335	10250	27.65
WPP1500D	4012TAG2	1500.0	1200.0	1637.5	1310.0	318.0	4940	2000	2335	10530	27.65
WPP1760D	4016TAG	N/A	N/A	N/A	N/A	N/A	N/A	N/A	N/A	N/A	N/A
WPP1850D	4016TAG1	N/A	N/A	N/A	N/A	N/A	N/A	N/A	N/A	N/A	N/A
WPP2000D	4016TAG2	N/A	N/A	N/A	N/A	N/A	N/A	N/A	N/A	N/A	N/A



Notes:

- Figures quoted are based on a Power Factor of 0.8
- All ratings are in accordance with ISO8528-1 and ISO3046, BS5514 and DIN6271 conditions
- All ratings quoted are based upon nominal 380V 3ph 50Hz and 440V 3ph 60Hz. Voltages outside these parameters may alter the quoted ratings.
- Ratings quoted are based on standard alternator. Customer preference may alter ratings to suit available frame sizes.
- Ratings based on Perkins supplied test data under NTP ambient conditions. Please contact Westac to assess if any derate is required
- Fuel consumption figures are in litres per hour at 100% continuous load.
- All information given is for guidance only and subject to alteration without notice

The information given in this leaflet is for the assistance of users and is intended for general guidance only. Due to a policy of continuous improvement the company reserves the right to amend details and specifications without notice and all information given is subject to the company's current conditions of sale (01/2004)



MEMBER
ASSOCIATION OF
MANUFACTURERS OF
POWER GENERATING SYSTEMS