

Technical Data Sheet

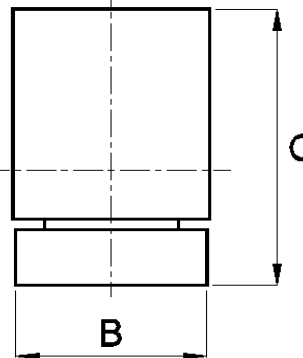
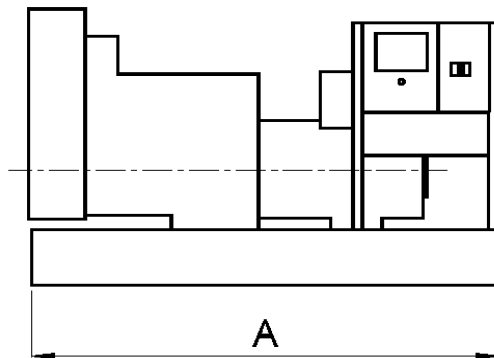
THE WESTAC RANGE OF VOLVO POWERED DIESEL GENERATING SETS

50 Hz

Model	Engine	Ratings				Fuel Cons	Approximate unpacked dimensions				
		Prime		Standby			Length (A)mm	Width (B)mm	Height (C)mm	Nett Wt Kg	Packed Vol m3
		KVA	KW	KVA	KW						
WPV85	TD520GE	85.0	68.0	93.0	74.4	19.57	2000	670	1550	1030	2.56
WPV100	TAD520GE	100.0	80.0	106.0	84.8	22.96	2185	865	1550	1180	2.92
WPV130	TD720GE	130.0	104.0	142.0	113.6	29.3	2340	865	1440	1500	3.57
WPV150	TAD720GE	152.0	121.6	166.0	132.8	32.7	2500	870	1440	1600	4.15
WPV175	TAD721GE	175.0	140.0	208.0	166.4	39.1	2450	1005	1735	1700	4.70
WPV200	TAD722GE	200.0	160.0	227.0	181.6	44.8	2450	1005	1735	1900	4.73
WPV250	TAD940GE	250.0	200.0	265.0	212.0	57.8	2815	1110	1765	2400	8.10
WPV280	TAD940GE	280.0	224.0	309.0	247.2	57.8	2815	1110	1765	2500	8.10
WPV325	TAD941GE	325.0	260.0	358.0	286.4	66.8	2815	1110	1765	2500	8.10
WPV350	TAD1240GE	350.0	280.0	380.0	304.0	75.0	2975	1110	1700	2750	7.75
WPV375	TAD1241GE	377.0	301.6	411.0	328.8	78.3	2975	1110	1700	2850	7.75
WPV400	TAD1242GE	400.0	320.0	454.0	363.2	85.7	2975	1110	1700	3000	7.75
WPV465	TAD1640GE	465.0	372.0	509.0	407.2	90.9	3110	1160	1970	3260	8.64
WPV500	TAD1641GE	500.0	400.0	565.0	452.0	99.8	3275	1160	1970	3390	9.80
WPV575	TAD1642GE	575.0	460.0	633.0	506.4	115.9	3275	1160	1970	3700	9.80

60 Hz

Model	Engine	Ratings				Fuel Cons	Approximate unpacked dimensions				
		Prime		Standby			Length (A)mm	Width (B)mm	Height (C)mm	Nett Wt Kg	Packed Vol m3
		KVA	KW	KVA	KW						
WPV85	TD520GE	87.0	69.6	97.0	77.6	20.78	2000	670	1550	1030	2.56
WPV100	TAD520GE	104.0	83.2	114.0	91.2	24.55	2185	865	1550	1180	2.92
WPV130	TD720GE	131.0	104.8	144.0	115.2	30.9	2340	865	1440	1500	3.57
WPV150	TAD720GE	160.0	128.0	175.0	140.0	35.9	2500	870	1440	1600	4.15
WPV175	TAD721GE	190.0	152.0	222.5	178.0	42.1	2450	1005	1735	1700	4.70
WPV200	TAD722GE	230.0	184.0	254.0	203.2	53.0	2450	1005	1735	1900	4.73
WPV250	TAD940GE	265.0	212.0	290.0	232.0	59.1	2815	1110	1765	2500	8.10
WPV280	TAD940GE	281.0	224.8	320.0	256.0	59.1	2815	1110	1765	2400	8.10
WPV325	TAD941GE	342.0	273.6	377.0	301.6	71.7	2815	1110	1765	2500	8.10
WPV350	TAD1240GE	350.0	280.0	382.0	305.6	80.0	2975	1110	1700	2750	7.75
WPV375	TAD1241GE	397.0	317.6	440.0	352.0	84.4	2975	1110	1700	2850	7.75
WPV400	TAD1242GE	456.0	364.8	500.0	400.0	99.2	2975	1110	1700	3000	7.75
WPV465	TAD1640GE	515.0	412.0	566.0	452.8	104.2	3110	1160	1970	3260	8.64
WPV500	TAD1641GE	550.0	440.0	625.0	500.0	120.9	3275	1160	1970	3390	9.80
WPV575	TAD1642GE	617.5	494.0	693.0	554.4	128.2	3275	1160	1970	3700	9.80



Notes:

1. Figures quoted are based on a Power Factor of 0.8
2. All ratings are in accordance with ISO8528-1 and ISO3046, BS5514 and DIN6271 conditions
3. All ratings quoted are based upon nominal 380V 3ph 50Hz and 440V 3ph 60Hz. Voltages outside these parameters may alter the quoted ratings.
4. Ratings quoted are based on standard alternator. Customer preference may alter ratings to suit available frame sizes.
5. Ratings based on Volvo supplied test data under NTP ambient conditions. Please contact Westac to assess if any derate is required
6. Fuel consumption figures are in litres per hour at 100% continuous load.
7. All information given is for guidance only and subject to alteration without notice

The information given in this leaflet is for the assistance of users and is intended for general guidance only. Due to a policy of continuous improvement the company reserves the right to amend details and specifications without notice and all information given is subject to the company's current conditions of sale (01/2004)


DIESEL GENERATORS & POWER SYSTEMS



MEMBER
ASSOCIATION OF
MANUFACTURERS OF
POWER GENERATING SYSTEMS